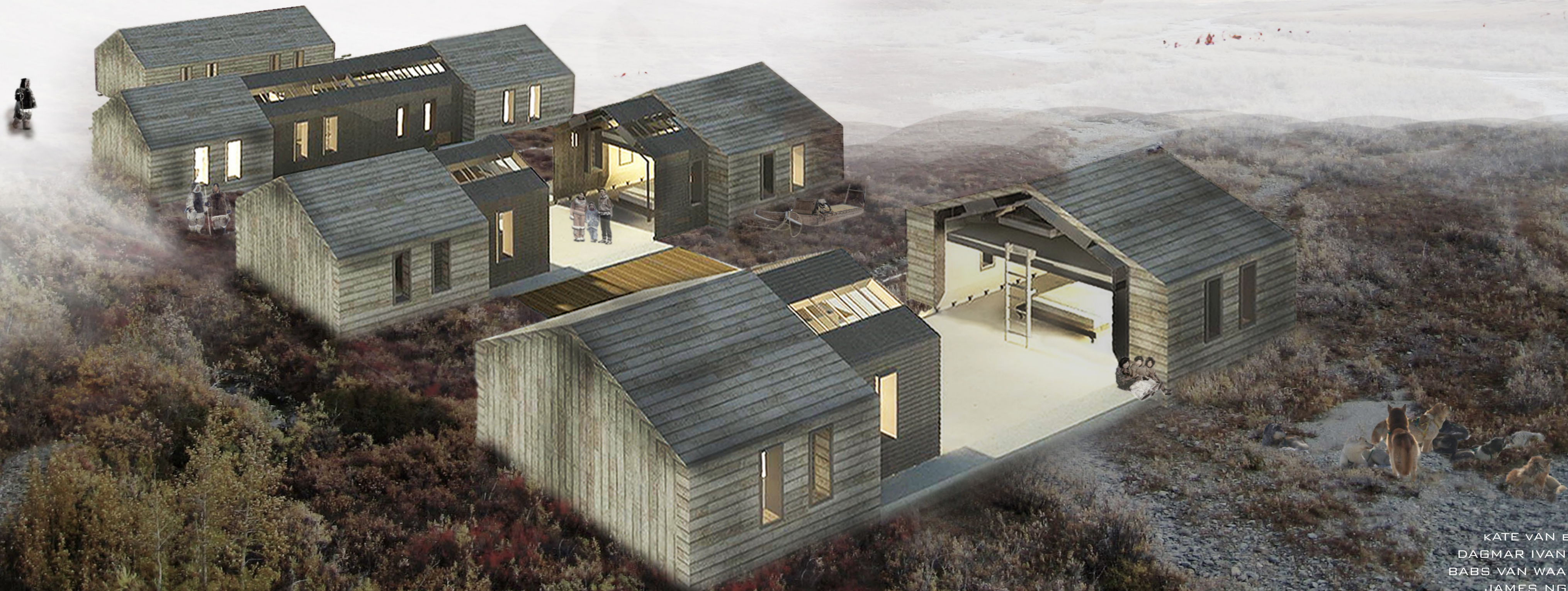


ADAPTIVE LIVING

ARCHITECTURE RESPONDING TO ITS ENVIRONMENT BY
ADAPTING TO SEASONAL, METEOROLOGICAL, AND SOCIAL
CONDITIONS.



KATE VAN BAKEL
DAGMAR IVANKO
BABS VAN WAARDEN
JAMES NGUYEN
KATHRYN DEKRAKER

RECYCLED WALLS



THE STRUCTURE OF THE HOUSES ARE PROVIDED WHILE OCCUPANTS LAYER RECYCLED MATERIALS AS CLADDING AND INSULATION. THE APPROACH ALLOWS TO ADDRESS THE OCCUPANTS INDIVIDUAL NEEDS AND CREATES INDIVIDUAL SPACES

THE PROJECT TAKES AN INCLUSIVE APPROACH, ADDRESSING THE SCARCITY AND EXTREME WEATHER CONDITIONS OF THE LAND WHILE FOCUSING ON THE NEEDS AND LIFESTYLE OF THE PEOPLE OF NUNAVIK.

OCCUPANTS ARE BOTH METAPHORICALLY AND LITERALLY INSULATED BY THEIR MATERIAL POSSESSIONS STORED BETWEEN MOVABLE WALLS. THE DWELLING OF DOUBLE WALLS AND INTERSTITIAL STORAGE SPACES NESTLE AND ELONGATE TO ACCOMMODATE THE RHYTHMS OF ARCTIC LIFE.

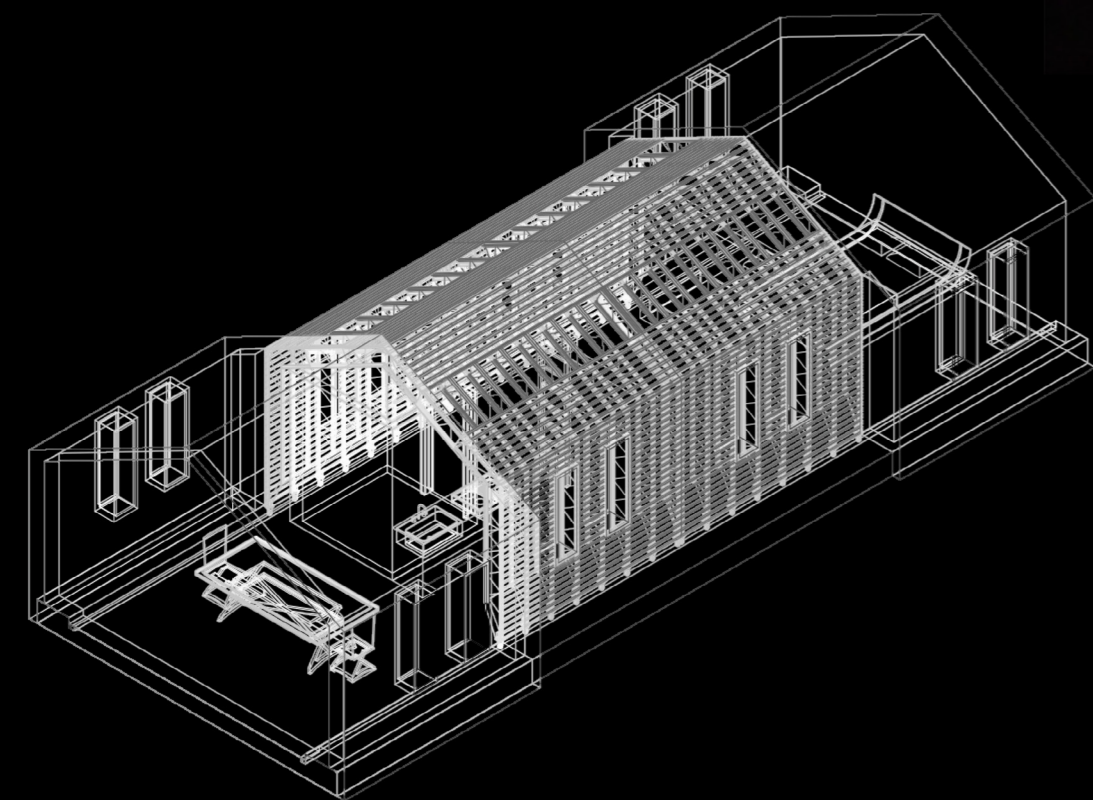
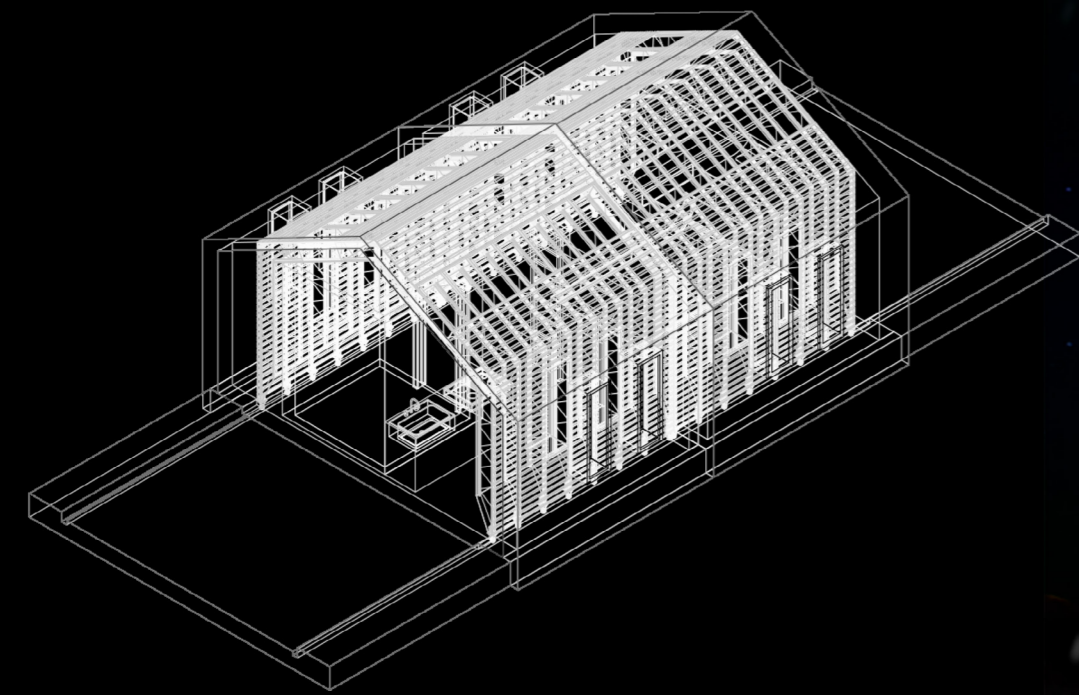
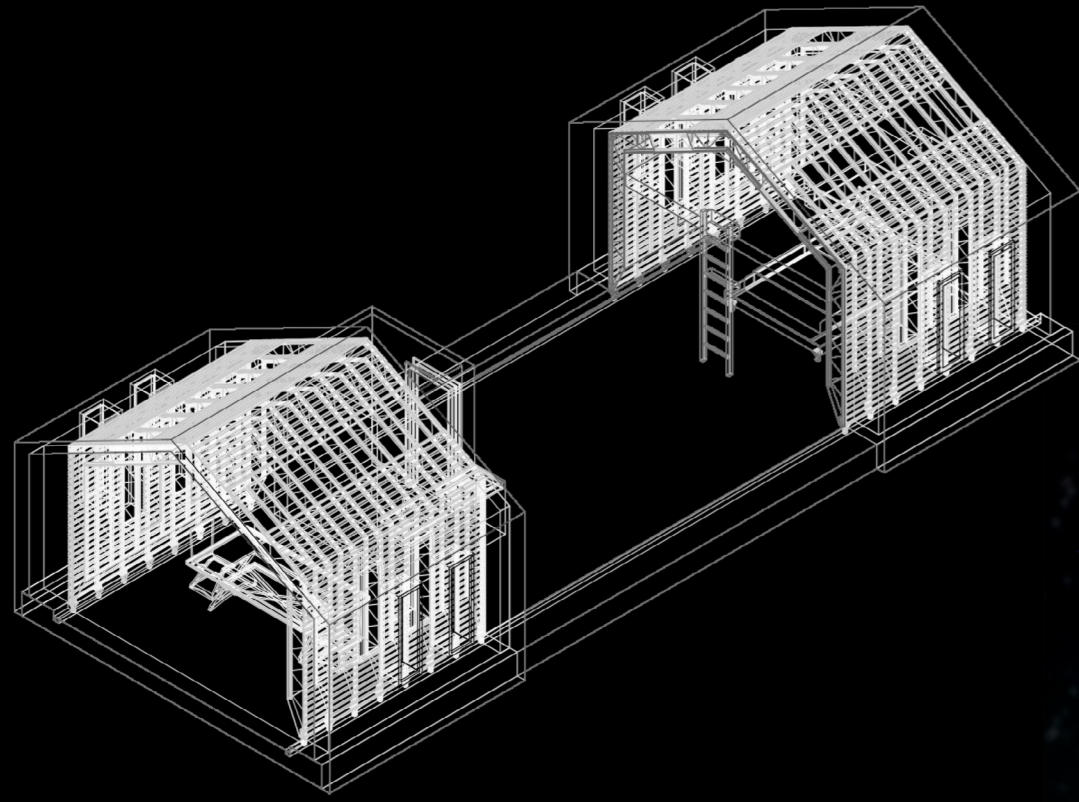
LONG, DARK WINTERS AND NIGHTS BRING WALLS AND PEOPLE TOGETHER INTO GREATER WARMTH AND INTIMACY. DAYTIME ACTIVITIES TAKE PLACE BY EXPANDING ROOMS ALLOWING TO ACCESS STORED ITEMS.

FAMILY AND OTHER COMMUNITY MEMEBERS FIND THEIR WAY INTO A SOCIAL SPACE ILLUMINATED BY THE SUN THROUGH THE CORE ROOM SKYLIGHTS. DURING WARMER DAYS, THE CORE WALLS ALONG WITH EXTERIOR WALLS MAY BE SEPARATED, FORMING A GREAT OPENING THAT ENGAGES THE SPACE WITH THE LANDSCAPE AND ADJACENT STRUCTURES IN THE COMMUNITY.

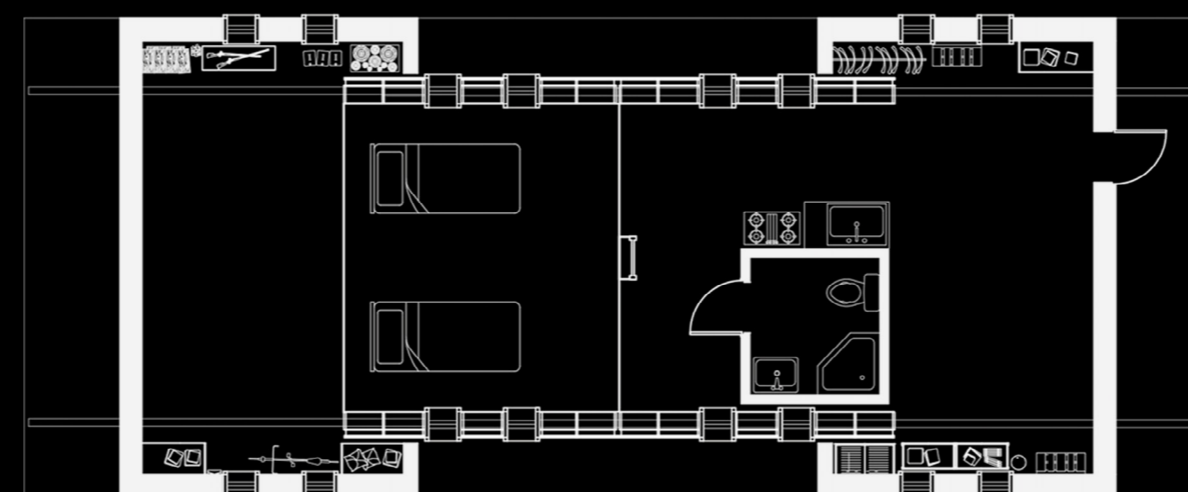


THERMAL EXPANSION

ADAPTIVE SPACE TRANSFORMATION IN RESPONSE TO SEASONAL CHANGE



OPEN CONFIGURATION



CLOSED CONFIGURATION

